

Providing an anchor like the café is key to attracting more people— families and children —and a real asset for all the users of the park.

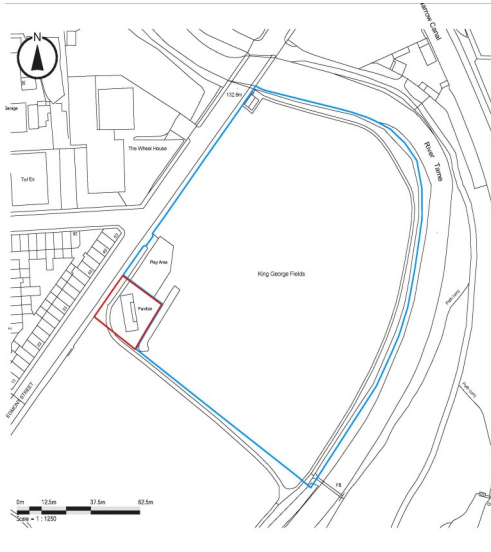
The vision of Mossley Town Council was to see how the whole area bounded by Egmont Street, Manchester Road and the Huddersfield Canal, could be improved over time for a range of activities, including the assets of the Tame Valley and the canal areas. Walking, linking to cycle routes and environmental and educational projects.

The park is owned by Tameside Council, who have supported this idea from the start. The Town Council, along with Tameside, have approved Works4U as the official partner for this project. We welcome their enthusiasm and believe they have met our brief for

the project very well.

We think that this project could create local jobs as it becomes established.

The site will be on a lease to W4U which will create confidence in developing new ideas for the building users.



*“Together we really want to create a space for young adults which will be a credit to the Mossley community”*

**Tell us what you think about this proposal, the park and the area outlined above?**

What do you think are the possibilities? We are not suggesting major changes, but thinking about what we might look for in future. Your ideas at this stage are very welcome, but more detail will be discussed as part of the consultations on the Mossley Neighbourhood Plan.

Email [theclerk@mossley-council.co.uk](mailto:theclerk@mossley-council.co.uk) Also go to; <https://mossley-council.co.uk/>



The existing changing rooms from the park

## **Egmont Street Changing Rooms A proposal for a new community café “The Pavilion”**

*An investment in young people, in the community of Mossley and creating a long term asset for the users of the park.*



<https://works4u.org.uk/>





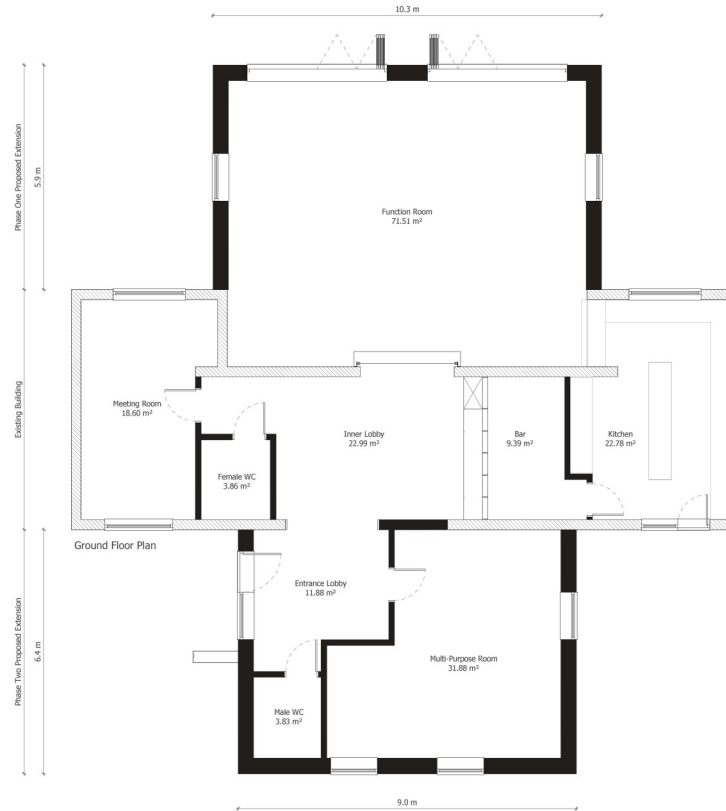
The proposals from the park side

### Works4U - Our Mission

**“We seek to enhance the lives of all learners by helping them to raise their self-esteem, build their confidence and achieve their full potential in terms of education and vocational training, recognised qualifications, skills and employment enhancement.”**

*W4U promote a safe and nurturing learning environment for young people between the ages of 14 and 24 and provide one to one support in developing their academic, social and independent living skills. We support young people who find accessing a mainstream school or college environment too much and require different levels of care. Here at Works4U, we understand that the circumstances of each learner is different but under the right guidance, we believe that all young people can flourish. We are Ofsted regulated.*

We offer skills and support in the food industry, animal care on our farm, arts therapy, construction, personal and social care, hospitality and catering, sports enrichment, added employability and maths and English development



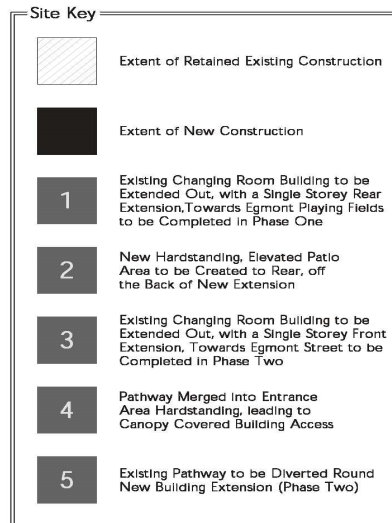
The original building is the cross on the plan, but the new design extends to the front and rear to make a huge difference in floor area.

This allows for kitchen and servery space, function, meeting and multi purpose rooms.

The main purpose as a café will be enhanced by space for all sorts of activities and will be available to be reserved for groups, parties and other events.

*Park users include the footballers, dog walkers and those just there to play. Tameside Parks have invested in more new play equipment and the **Friends of Egmont Street** have done a magnificent job in creating their gardens.*

Designed by -



The proposals from the Egmont Street side